



Helix Road, SW2

2 bedroom flat to let

£430 Per Week

Furnished

Property Details

A stunning, bright two bedroom flat with roof terrace - situated just around an eight minute walk from Brockwell Park. This beautiful property comprises two good sized double bedrooms - one of which leads onto your own private roof terrace ideal for the coming summer months, a sleek open plan kitchen and reception area and a modern family sized bathroom. Living here you'll be in equal distance of both Herne Hill and Brixton, you'll be around a seventeen minute walk from Brixton underground and everything that Brixton high street has to offer in terms of chained and local shops, bars and restaurants.

Features

- Two bedrooms
- Private roof terrace
- Open kitchen and reception
- Bright and airy
- Around a 16 minute walk to Herne Hill station
- Around a 17 minute walk to Brixton high street
- Around an 8 minute walk to Brockwell park

Council tax band C EPC rating C (70)





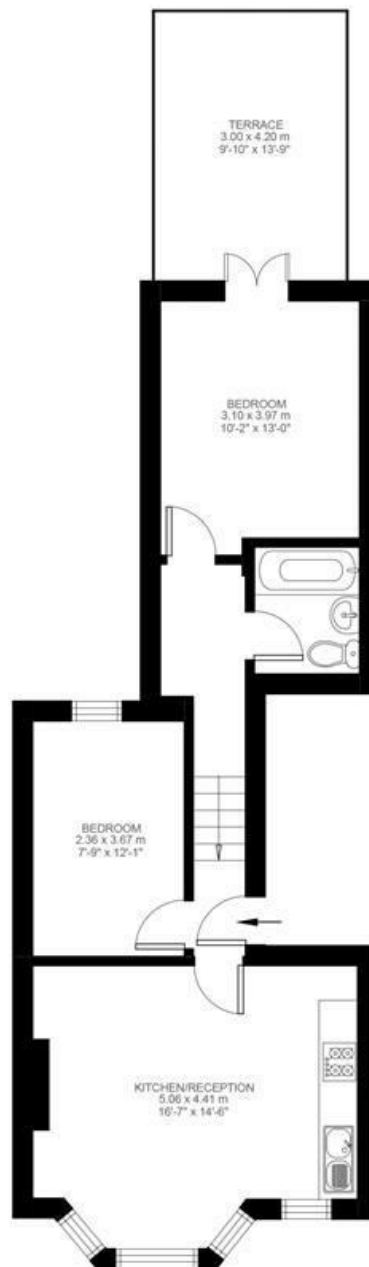
2 Bedroom Flat

Approx internal area:

565 sqft 52 sqm

While we do try our very best, floor plans are produced as a guide only and we take no responsibility for the precise accuracy with which any property is represented

Helix Road



First Floor



Helix Road, SW2

